

Browser Market Share

As of 11/20/09

This month FF2 has officially dropped to a priority 3 browser. IE8 is up by about 3% and IE7 is down by about the same. I've shifted IE7 into the priority 2 category. Its market share is decreasing. Relative to other browsers IE7 is a lower priority. IE6 has not changed, and is still a priority 1 browser. FF3 currently has the largest market share. But I suspect that in a few months, IE8 will eclipse FF3. Both Chrome and Safari are down slightly.

Priority 1	Priority 2	Priority 3
<ul style="list-style-type: none"> ▲ FF3x: 25-30% * IE6: 20-25% ▲ IE8: 16-20% 	<ul style="list-style-type: none"> ▼ IE7: 16-20% ▼ Safari: 3-5% ▼ Chrome: 3-5% 	<ul style="list-style-type: none"> ▼ FF2: <2% * Opera: <1% iPhone: <1%
		New Browsers (watch out)
		N8: <1%
		Old Browsers (forget 'em)
		IE5 (PC & MAC): <1%
		N4: <1%
		AOL: unknown

* Only Hitslink breaks up FF2 and FF3. This is a best guess estimate.

Sources:

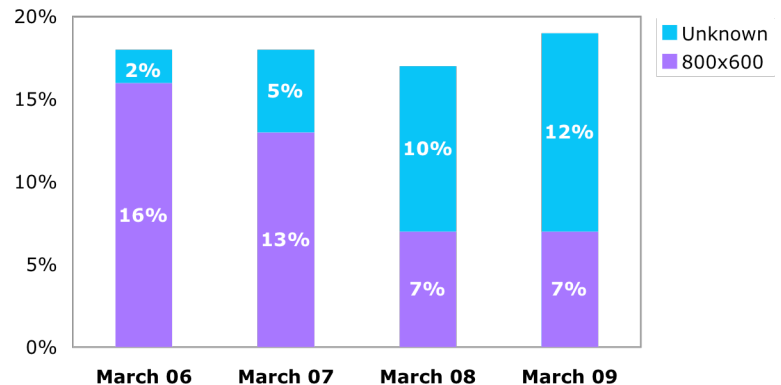
- **Upsdell** <http://www.upsdell.com/BrowserNews/stat.htm> - Upsdell sources are documented on the sidebar of this page: http://www.upsdell.com/BrowserNews/stat_trends.htm
- **W3Schools**: http://www.w3schools.com/browsers/browsers_stats.asp
- **Net Applications/Hitslink**: <http://marketshare.hitslink.com/report.aspx?qprid=3>
- **Net Applications/Hitslink**: <http://marketshare.hitslink.com/browser-market-share.aspx?qprid=2>

Screen Resolution (800x600 or 1024x768)

800x600 is still valid for development

Programmers might not like it, but nationally after falling steadily for a number of years, 800x600 resolution has leveled out at a hefty 7%. As much as we want to always use 1024 x 768, we can't "assume" that's the smart choice for every client at this point.

Another very interesting trend in browser resolution is how quickly the "Unknown" category has increased. This is partly due to people having larger monitors, or non-standard monitor sizes, but also due to the fact that many Netbooks and PDAs (iPhone, Blackberry, etc.) have screens which are 800x600 or smaller. We feel it's safe to assume that as much as half of the "unknown" resolutions that have shown up in the past few years are 800x600 or smaller, bringing the total browsers which are 800x600 or smaller to an estimated 7%-12%.



Source: The Counter